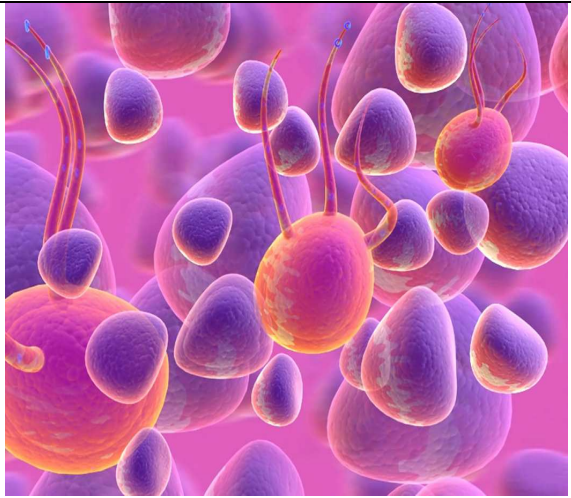


Cellular and Tissue Engineering
 580.440, Profs. Elisseeff and Yarema
 November 7, 2007

Dr. Sue Vazakas can be found at:
 svazakas@jhu.edu, 410-516-4153
 Office #C-30 on C-level
 Facebook; MySpace

Robin Sinn, Life Sciences Librarian:
rsinn@jhu.edu, 410-516-8346
 Office #C-32 on C-level



LIBRARY CATALOG -- What is it and why use it?

The JHU Libraries Catalog contains records for all JHU Libraries, including Welch Medical Library, SAIS library in Washington, Gibson Library at the Applied Physics Lab, and other libraries of Johns Hopkins. It lists all the books, videos, DVD's, microforms, and other materials owned by the JHU libraries.

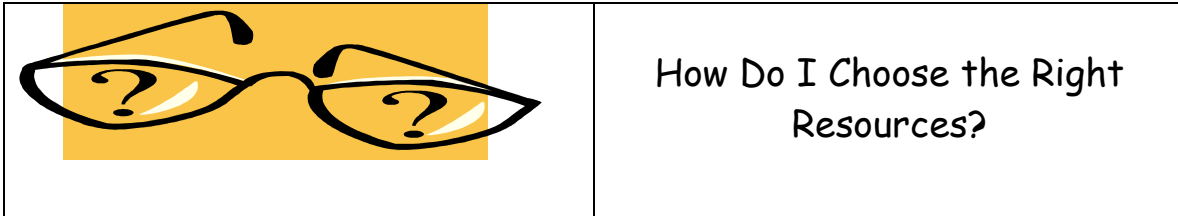
A BIG DIFFERENCE :

Catalog: lists book titles and journal *titles* (not articles)

Databases: gives journal *article* information

The library catalog - things to watch for:

Copy/Holding information				
Collection	Call No.	Copy	Status	
Eisenhower Stacks	R 856.15 .B56 1995	c. 1	Available	
Eisenhower Stacks	R 856.15 .B56 1995	c. 2	Checked out	12/01/2007 Request Add Copy to MyList
Eisenhower Science Reference, Non-Circ		R856.I47 2005	c. 1	Available
Libraries Service Center	R856.A2 S681 1986	c. 1	Available	
Eisenhower Stacks, Non-Circ	R 856 .C5	c. 1	Available	
Eisenhower Stacks	QA303.2.S35 2003 QUARTO	c. 1	Available	



TO START: Look for BACKGROUND Information

BOOKS in the JHU Libraries catalog

Go the catalog and choose **ADVANCED KEYWORD**, then put your word into **TITLE** or **SUBJECT** or **MEDICAL SUBJECT KEYWORD**. For example, type "**cell engineering**" into **TITLE KEYWORD** and you get 22 items. If your set is too small, remove a word or think of synonyms; if it's too large, add another title keyword or use other limits (e.g., Eisenhower Library Building).

Remember that once you find a book you like, others about that same topic will be there, too, with that same main call number.

If you want a book that's checked out, or located at another JHU library (including the libraries on the medical campus), or otherwise not immediately available, use the wonderful blue **REQUEST** BUTTON in the catalog record -- your book will be brought to the Circulation Desk for you.

BOOKS not owned by JHU

Interlibrary Loan - Your library can get you *anything* from *anywhere*! When you find a book that JHU does not own, use the Interlibrary Services form at <http://ils.library.jhu.edu/> .

Make sure to fill out the "First Time Users' Registration page first. (Use your JHED ID and password.)

NOTE: When doing this at a public access workstation:

- Delete from the history file those pages that contain your personal information.
- Exit from the Web browser before you leave the workstation. This prevents the "Back" button from accessing the pages you were using.

TO GET DETAILS ABOUT YOUR TOPIC:
Look for JOURNAL ARTICLES

Which database should I choose?

Go to our database page:

<http://www.library.jhu.edu/eresources/databases/index.html>

Then what?

Choose a subject (e.g., "Engineering" or "Biology")

How do I know which database to pick?

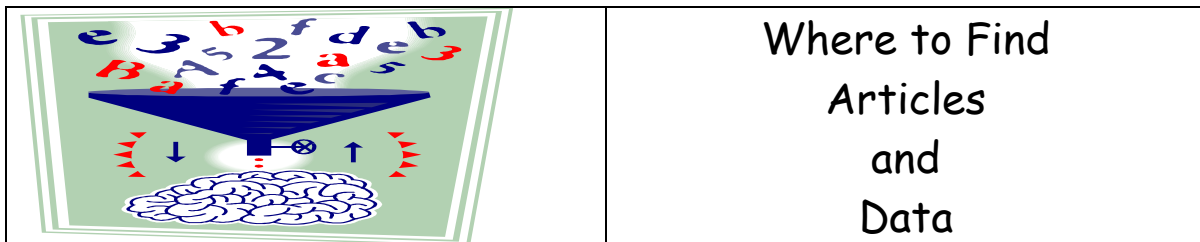
Click on the round blue "i" for "Information." That will give you a few sentences about what the database covers.

I need more advice about which database to pick. Where can I find that?

Use the helpful "Guides to Research by Subject." These are guides created by the librarians with tips about how to find types of information.

These guides can be found at

<http://www.library.jhu.edu/researchhelp/subjectguides.html> .



Here is the page listing good databases to search for Engineering articles and information: <http://www.library.jhu.edu/eresources/databases/engineering.html>

Material Properties, Handbooks, and Data

Look at the page on the Engineering Subject Guide entitled "material properties and data": <http://www.library.jhu.edu/researchhelp/physics/properties.html>

ENGnetBASE

This is a collection of hundreds of online engineering books published by CRC Press. Subjects include biomedical, civil, computer, electrical, lasers and optical, nanotechnology, systems, and more.

Tip: Don't spend time drilling down through "categories"; just enter your search term in the box on the upper right. What will come up is a list of chapters and the name of the book they're in.

Click on a chapter title and you'll go to the searchable PDF.

Methods and Protocols

We have online methods and protocols. Here is the Biology subject guide's page to our online and print sets of methods and protocols:

<http://www.library.jhu.edu/researchhelp/biology/protocols.html> .

The Best Article Databases

Applied Science and Technology Full-Text (1983+)

This database covers periodicals in the sciences and technology, including journal articles, conference proceedings, editorials, some letters, tables, and buyers' guides. The periodicals are international English language, with monthly updates.

Compendex (Engineering Index) (1884+)

This huge database covers all aspects of engineering. Articles from 5,000+ engineering journals, conferences, and other publications are indexed. Because this is an engineering database, you can use pretty specific words for your searches.

IEEE Explore (1988+)

This database contains the publications of the IEEE (Institute of Electrical and Electronics Engineers). This organization is a group of societies, one of which is "Engineering in Biology and Medicine."

PubMed (mid-1950s+)

PubMed contains article citations and abstracts from journals in medicine, nursing, bioethics, and biomedical topics.

Tip: To get more full text, use the link from the library database page, NOT "pubmed.gov"!

More PubMed Tips:

- 1) Truncation symbol is * (after at least 3 letters); e.g., injur*
- 2) Capitalize AND, OR, and NOT
- 3) To avoid getting letters and editorials, check the box for "only items with abstracts" under LIMITS



Other Important Things to Know

- 1) **How to cite print and electronic resources that you use:**
<http://library.jhu.edu/researchhelp/general/citing/index.html>

[For examples on how to cite online sources, scroll down to "Additional Resources" and choose "Columbia Guide to Online Style."]
- 2) **Using and printing from laptops in the library:**
<http://www.library.jhu.edu/services/computing/laptops.html>
<http://www.library.jhu.edu/services/computing/laptopprinting.html>
- 3) Look for "scholarly" resources; that is, articles and data that have been evaluated. For tips on how to do this, see "Is This Item Peer-reviewed?" at <http://www.library.jhu.edu/researchhelp/histsci/studentpubspeer.html>
- 4) **Google Scholar - (If you must use any kind of Google, use Google Scholar!)**
<http://scholar.google.com>

JHU now has much of our full text linked up. To find out more, go to <http://www.library.jhu.edu/researchhelp/googlescholar.html> .

Tip: Because this search engine covers so much, use several very specific terms and enclose phrases in quotation marks.